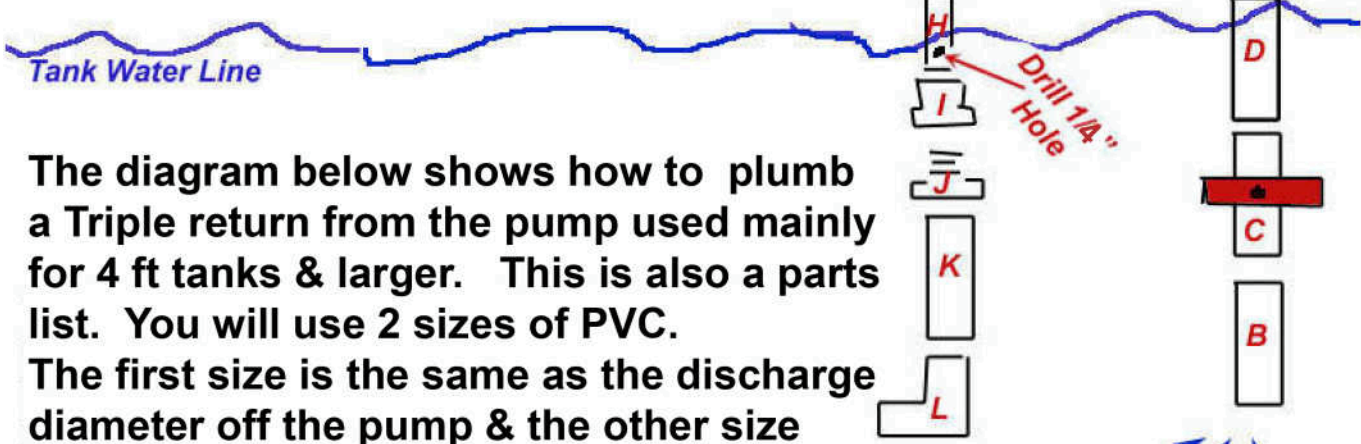
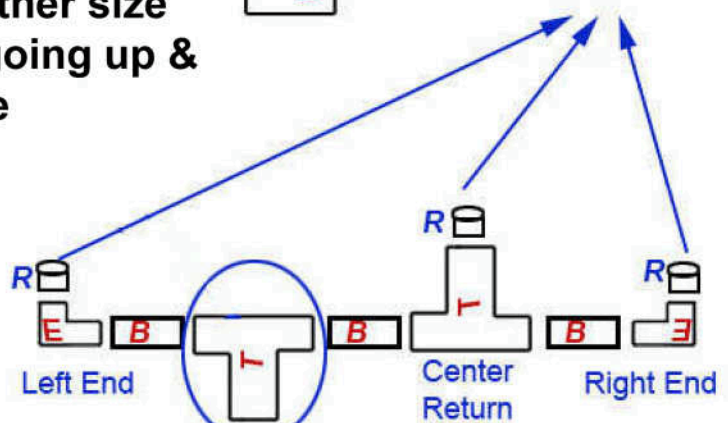


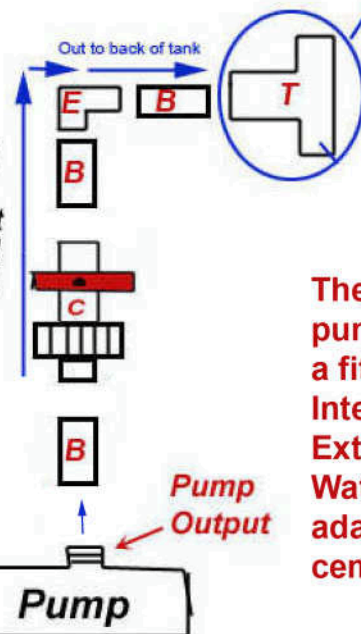
**"Return" Parts List**  
*Not To Scale*



The diagram below shows how to plumb a Triple return from the pump used mainly for 4 ft tanks & larger. This is also a parts list. You will use 2 sizes of PVC. The first size is the same as the discharge diameter off the pump & the other size (used on the vertical returns going up & into your tank) will be one size smaller.



- A = Union
- A<sup>2</sup> = Male Adaptor
- B = Straight PVC
- C = Ball Valve w/union
- D = Straight PVC
- E = Elbow
- F = Straight PVC -Short
- G = Elbow
- H = Straight PVC - Short
- I = Female Threaded Ad
- J = Male Threaded Adap
- K = Straight PVC
- L = Elbow
- T = PVC "T"
- R = Reducer



The style of the discharge on your pump will determine what to use for a fitting to connect to the pump. Internal threads will use a Male adaptor. External threads will use a Female adaptor. Water blaster pumps come with an adaptor so you only need straight PVC cemented to their fitting.

**Important NOTE:** 1/4" Hole - this hole will suck in air & break the back feed upon turning off the pump or for a power outage. Keep this hole clean or your return will continue to siphon water to your sump until the bottom elbow (L) sucks air!

**You MUST drill this 1/4"+ hole in all returns just a hair under the water!**